

BELLOWS SEAL GLOBE VALVES 1500LB

PRODUCT FEATURES

- Long-neck valve cover, rising stem
- Dual bellows seal for zero leakage
- Stellite alloy hardfacing for sealing surfaces
- Valve shaft with guiding support

MATERIALS

- F304 Body
- Disc Surfacing STL
- Seat Surfacing STL
- SS316L Bellows
- SS316 Stem

TECHNICAL DATA

- ASME B16.34/B16.1
- Class 1500LB
- Available in ½" ~ 3"
- Temperature Range:
-20°F ~ 482°F

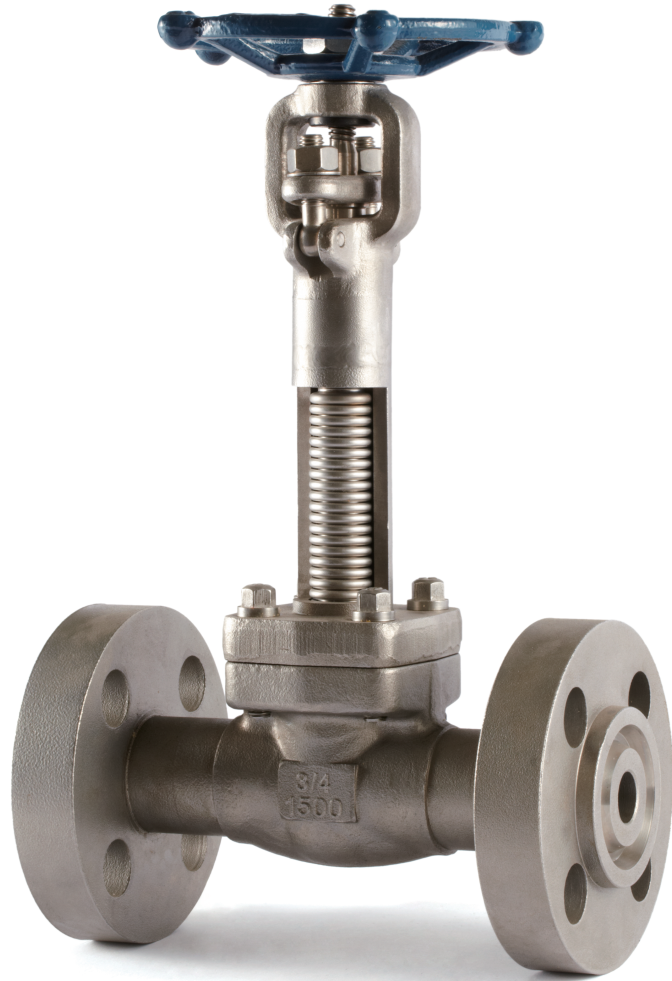


FIG. BG744-B

BELLOWS SEAL GLOBE VALVES - 1500LB

DIMENSIONS

In	1/2	3/4	1	1-1/4	2	3
L	216	229	254	305	371	473
D	120	130	150	180	215	265
d1	82.6	88.9	101.6	123.8	165.1	203.2
d2	60.5	66.5	71.5	92.0	124.0	168.0
B	22.3	25.4	28.6	31.8	38.1	48.0
F	6.35	6.35	6.35	6.35	7.91	7.90
N-Φ	4-Φ22	4-Φ22	4-Φ26	4-Φ30	8-Φ26	8-Φ33
RJ NO.	R12	R14	R16	R20	R24	R30

MATERIALS LIST

No	Part	Specifications
1	Body	ASTM A182 F304+STL
2	Disc	ASTM A182 F304+STL
3	Stem	ASTM A276 431
4	Gasket	SS304+Graphite
5	Lower Fixing Plate	SS304
6	Bonnet	ASTM A182 F304
7	Bolt	SS304
8	Extension Tube	ASTM A182 F304
9	Bellows	SS316L
10	Upper Fixing Plate	SS304
11	Pin	SS304
12	Yoke	ASTM A182 F304
13	Washer	SS304
14	Packing	SS316 Graphite
15	Pin	SS304
16	Bushing	SS304
17	Eye Bolt	SS304
18	Packing Gland	ASTM A182 F304
19	Gland Nut	SS304
20	Yoke Nut	ASTM 420B
21	Handwheel	C.S
22	Lock Nut	SS304

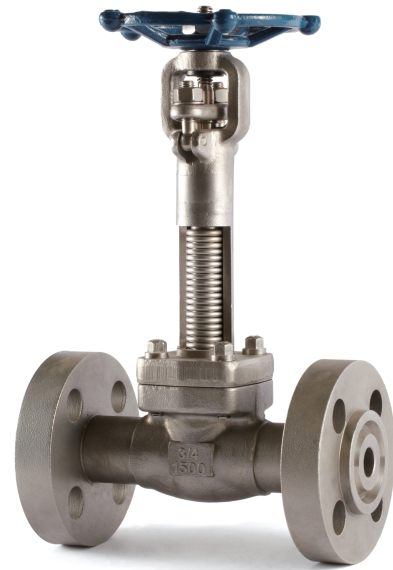


FIG. BG744-B

